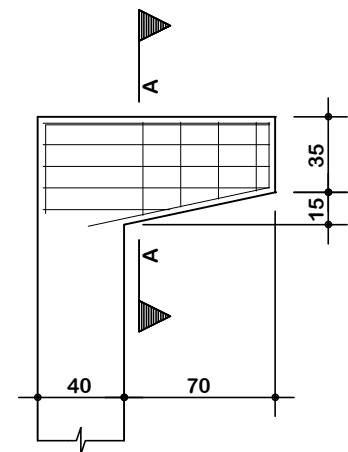
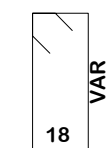
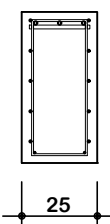


**C7
20X**

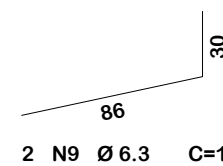
PP1-a/PP1-b/PP1-c/PP1-d/PP1-e/PP1-f/PP1-g/PP1-h/PP2-a/PP3-a/PP4-a/PP4-b/
PP4-c/PP4-d/PP4-e/PP4-f/PP4-g/PP4-h/PP5-a/PP6-a



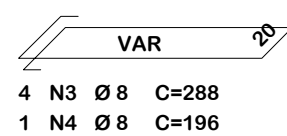
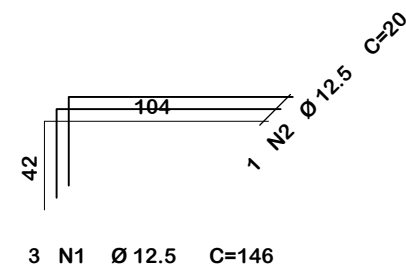
Corte A-A



- 1 N5 Ø 6.3 C=138
- 1 N6 Ø 6.3 C=130
- 1 N7 Ø 6.3 C=124
- 1 N8 Ø 6.3 C=116

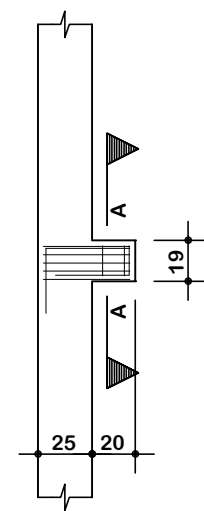


- 2 N9 Ø 6.3 C=116

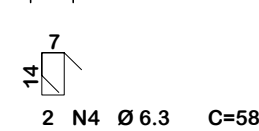
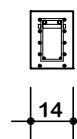


**C9
8X**

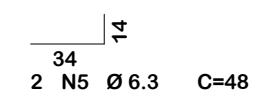
2xPP2-a/2xPP3-a/2xPP5-a/2xPP6-a



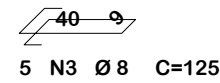
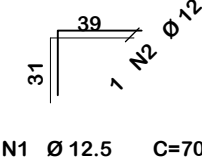
Corte A-A



- 2 N4 Ø 6.3 C=58

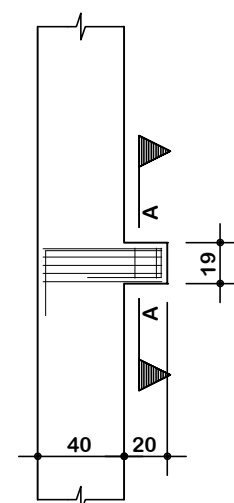


- 2 N5 Ø 6.3 C=48

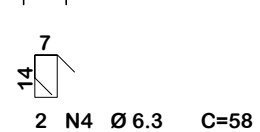
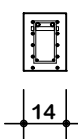


**C9
8X**

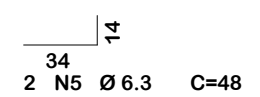
2xPP2-a/2xPP3-a/2xPP5-a/2xPP6-a



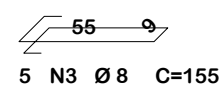
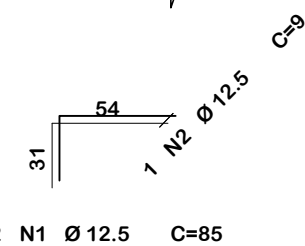
Corte A-A



- 2 N4 Ø 6.3 C=58

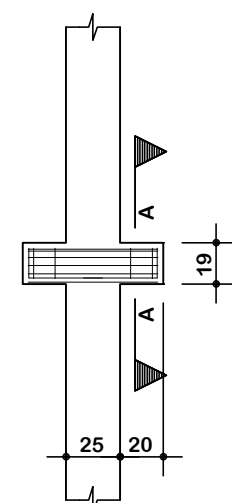


- 2 N5 Ø 6.3 C=48

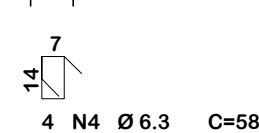
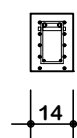


**C9
44X**

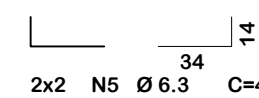
2xPP1-a/2xPP1-b/2xPP1-c/2xPP1-d/2xPP1-e/2xPP1-f/2xPP1-g/2xPP1-h/2xPP4-a/
2xPP4-b/2xPP4-c/2xPP4-d/2xPP4-e/2xPP4-f/2xPP4-g/2xPP4-h/2xPP7-a/2xPP7-b/
2xPP7-c/2xPP8-a/2xPP8-b/2xPP8-c



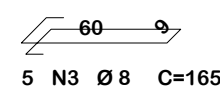
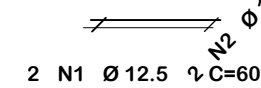
Corte A-A



- 4 N4 Ø 6.3 C=58



- 2x2 N5 Ø 6.3 C=48



Resumo de materiais

RESUMO DE AÇO CONSOLES		
AÇO	BITOLA (mm)	PESO (kg)
60	5	-
50	6.3	90
	8	294
	10	-
	12.5	172
Peso Total		556 kg

Notas Gerais

Materiais:

- Aço.....: CA50 e CA60
- Concreto Estrutura.....: 30 MPa (300 kgf/cm²)
- Concreto Sapatas.....: 30 MPa (300 kgf/cm²)
- Deve ser utilizado espaçadores plásticos para garantir o recobrimento dos elementos

Recobrimentos:

- Vigas.....: 2.5cm
- Pilares.....: 2.5cm
- Sapatas.....: 5.0cm

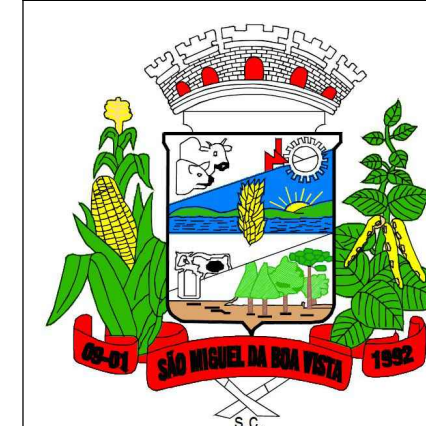


ASSOCIAÇÃO DOS MUNICÍPIOS DO ENTRE RIOS-SC

BOM JESUS DO OESTE-CAIBI-CAMPO ERÉ-CUNHA PORÀ-CUNHATAÍ-FLOR DO SERTÃO
IRACEMINHA-MARAVILHA-MODELO-PALMITOS-RIQUEZA-ROMELÂNDIA-SALTINHO
SANTA TEREZINHA DO PROGRESSO-SÃO MIGUEL DA BOA VISTA-SAUDADES-TIGRINHOS

ENDEREÇO:

Av. Euclides da Cunha, 160 - Cx. P. 47 - Centro
89.874-000 - MARAVILHA - Santa Catarina
Fone/Fax: (0**49) 3664-0282- e-mail:amerios@amerios.org.br
CNPJ 00.961.206/0001-88



MUNICÍPIO DE SÃO MIGUEL DA BOA VISTA/ SC

OBRA:

PROJETO ESTRUTURAL
PAVILHÃO INDUSTRIAL

RESPONSÁVEL TÉCNICO:
RAFAEL CASSOL BASSO
ENGENHEIRO CIVIL
CREA / SC: 112.213-2

ASS. RESP. TÉCNICO:

ESPECIFICAÇÕES:

DETALHAMENTO: CONSOLES

PROPRIETÁRIO:

MUNICÍPIO DE SÃO MIGUEL DA BOA VISTA/SC

ASS. DO PREFEITO:

MUNICÍPIO DE SÃO MIGUEL DA BOA VISTA
CNPJ: 80.912.124/0001-82

FOLHA:

LOCAL:

MARGENS DA RODOVIA SC 492 - ÁREA INDUSTRIAL

DESENHO:

RAFAEL CASSOL BASSO

Nº DESENHO:

Engenharia/Projetos2022/SMBV

DATA:

JANEIRO / 2023

ÁREA:

748,55 m²

ESCALA:

1:50/1:25